



# 3Com® AirConnect® 9550 11n 2.4+5GHz PoE Access Point 3Com AirConnect 9150 11n 2.4GHz PoE Access Point

DATA SHEET

Secure and reliable,  
high-speed 11n  
wireless connectivity  
in a cost-effective PoE  
access point with  
advanced business-  
class features

## OVERVIEW

Reliable, secure, high-speed IEEE 802.11n wireless networking has just been made practical. These innovative and cost-effective Power over Ethernet (PoE) access points—compliant with 802.11n Draft 2.0—are suitable for businesses of all sizes and are available in two configurations:

- › the 3Com® AirConnect® 9550 dual-radio access point has both 2.4 and 5 GHz 802.11n radios allowing it to support simultaneous 2.4 GHz 11b/g/n and 5 GHz 11a/n wireless connections
- › the 3Com AirConnect 9150 single-radio access point has a 2.4 GHz 11n radio allowing it to support 2.4 GHz 11b/g/n wireless connections

Either access point is powered using a single, standard IEEE 802.3af PoE connection, eliminating the need for proprietary PoE injectors or bulky and inefficient external power supplies.

The access points support the latest, most effective authentication techniques to thwart intruders and simplify network management. Advanced network security with Wi-Fi Protected Access (WPA2™), Advanced Encryption Standard (AES) and IEEE 802.1X authentication protect communication over the wireless LAN and help ensure only authorized users access the network.

High-level security and network management include support for multiple SSIDs, IEEE 802.1Q VLANs, and secure WDS bridging.

Advanced Multiple-Input Multiple-Output (MIMO) technology provides enhanced wireless range.

## KEY BENEFITS

### ENABLING WIRELESS FREEDOM

Take advantage of the freedom of high-speed networking without wires with the Wi-Fi® CERTIFIED™ 3Com AirConnect 9150 and 9550 access points. Wireless LANs (WLANS) cost-effectively extend secure mobile access to employees, contractors and guests, creating a more flexible environment that supports workgroup collaboration and mobile applications such as wireless VoIP, scanners and other handheld IP technology.



in front: 3Com AirConnect 9550 11n 2.4+5GHz PoE Access Point,  
AirConnect 9150 11n 2.4GHz PoE Access Point

## KEY BENEFITS (CONTINUED)

### SUPPORTS COMPLETE IEEE 802.11 STANDARDS

The 3Com AirConnect 9550 supports all IEEE 802.11 2.4 and 5 GHz networking standards—11a, 11b, 11g and 11n Draft 2.0.

The AirConnect 9150 supports the 2.4 GHz networking standard—the more common 11b, 11g and 11n draft 2.0.

### PROVIDES DEPLOYMENT FLEXIBILITY WITH POWER PROVISIONING OPTIONS

PoE provides flexible installation options. Powering the APs with standard IEEE 802.3af PoE makes it easier than ever to overcome installation problems by eliminating the need for an AC power plug at each AP. Any 3Com PoE switch or other 802.3af-compliant PoE product supplies both power and data to the access point through the same Category 5 or 6 Ethernet cable, useful and more economical in hard-to-wire locations.

### SECURES AND PROTECTS WIRELESS COMMUNICATIONS

3Com offers one of the most robust suites of standards-based security on the market today. To protect wireless data, WPA2 with 128-bit AES encryption provides the latest, toughest standards-based security; WEP encryption is also supported for legacy clients.

To protect against unauthorized network access, the access points support IEEE 802.1X authentication and authorization through backend RADIUS servers using EAP-TLS, PEAP and EAP-TTLS. MAC address access control and peer-to-peer client restrictions provide further security options.

### PROVIDES SECURE ACCESS CONTROL

Configure up to four SSIDs per radio with different security profiles for different groups of users. IEEE 802.1Q-compliant VLAN support works with the multiple SSID feature to protect company confidential files from those who should not have access, such as guest workers.

### SOLVES COMPLEX CONNECTIVITY PROBLEMS

Wireless Distribution System (WDS) bridging solves complex wireless connectivity problems. The access point supports both point-to-point and point-to-multipoint WDS links for flexible network deployment across floors or between nearby buildings.

### HIGH PERFORMANCE AND RELIABLE

Desktop or notebook users can wirelessly access network resources and applications at 802.11n Draft 2.0 speeds, ideal for multimedia applications. A host of features and MIMO technology ensure reliable wireless connectivity and excellent range and throughput. Wi-Fi certification helps ensure interoperability with other vendors.

3Com backs each product with global sales, service and support along with technology, financial and operational strength.

### SIMPLIFIED SET UP; USE RIGHT OUT OF THE BOX

Setup and operation are designed for easy deployment. In addition to SSID and VLAN configuration flexibility, the AP discovery utility and Web interface simplify secure setup. Preset defaults get you up and running quickly.

### BACKWARD COMPATIBILITY

The AirConnect 9550 is compatible with existing IEEE 802.11a, b and g networks. The AirConnect 9150 is compatible with existing IEEE 802.11b and g networks.

## FEATURES AND BENEFITS

### FLEXIBLE HIGH-SPEED CONNECTIVITY

Multiple-Input Multiple-Output (MIMO)	Advanced MIMO technology provides enhanced wireless range and coverage area for improved roaming and ubiquity
Internal antennas	Three built-in antennas per radio allow a compact and aesthetic design that is ideal for wall-mounting in professional office spaces
Support for external antennas	Three R-SMA connectors allow you to add optional external antennas for increased range in bridging applications
WiFi Multimedia (WMM®) support	Improves the user experience for audio, video and voice applications
Wi-Fi CERTIFIED	a*/b/g/n certification helps ensure interoperability with Wi-Fi CERTIFIED products from other vendors
High-speed 802.11 standards support	Support for 802.11n Draft 2.0 provides the highest possible wireless speeds Provides complete access to 2.4 and 5* GHz IEEE 802.11a*/b/g and 802.11n Draft 2.0 wireless networks
Backward compatible with 11b/g users	Supports high speeds while protecting existing investments

### ROBUST SECURITY FEATURES

IEEE 802.1X network access control	IEEE 802.1X network access control and EAP authentication provide the latest, most effective authentication techniques to help thwart intruders and simplify network management
WPA2/WPA™ (Wi-Fi Protected Access) and WEP (Wired Equivalent Privacy)	Supports advanced 128-bit WPA/WPA2 encryption, and 40-/64- and 128-bit WEP encryption for legacy wireless clients
Multiple SSID support with SSID isolation	Create SSIDs with specific settings for each group of wireless users to segment traffic; SSIDs can be bridged together or isolated
MAC address access control	Filters MAC addresses on devices so that only trusted clients gain access to the WLAN
802.1Q VLAN support	Groups users according to data or traffic requirements to segment traffic flow based on business priorities.

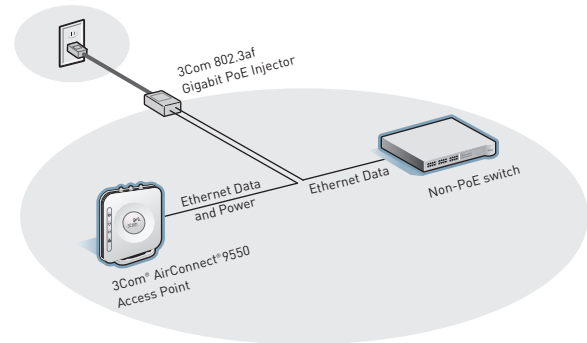
### INSTALLATION AND MANAGEMENT EASE

Web browser-based administration	Familiar browser interface lets you configure and manage APs from anywhere on the network; preset defaults simplify setup and operation
Access point discovery utility	Automatically discovers AP devices to simplify configuration and management (PCs with Windows based operating systems only).
PoE support	Expands installation options by eliminating the need for power adapters and AC outlets for APs
WDS bridging	Access points can function as bridges to join LAN segments and support point-to-point or point-to-multipoint configuration modes
SNMP support	Enables the AP to be centrally managed by popular standards-based network management applications using SNMP v1 and v2c
Syslog support	Enables the access point to be centrally monitored by sending data to the network Syslog server
Multiple mounting options	The access point can be mounted in any of three convenient manners: wall-mount, desktop mount or ceiling mount

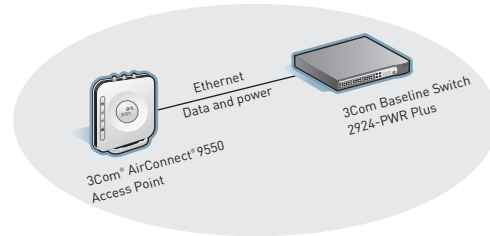
\* 5 GHz and 802.11a support available with the AirConnect 9550.

### PoE Support

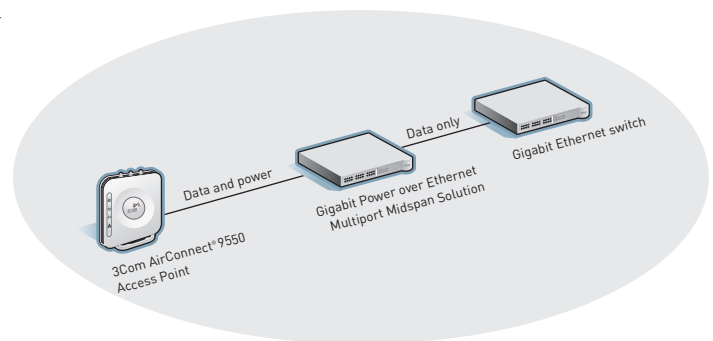
Choose from several power options to match your installation needs. First, the PoE access point can be powered with any standard 802.3af PoE injector such as 3CNJPSE-GIG. Note that the PoE injector should support gigabit links for maximum performance.



The access point can also be powered using an 802.3af-compliant PoE Gigabit switch. The switch provides both data and power through the Ethernet cable.

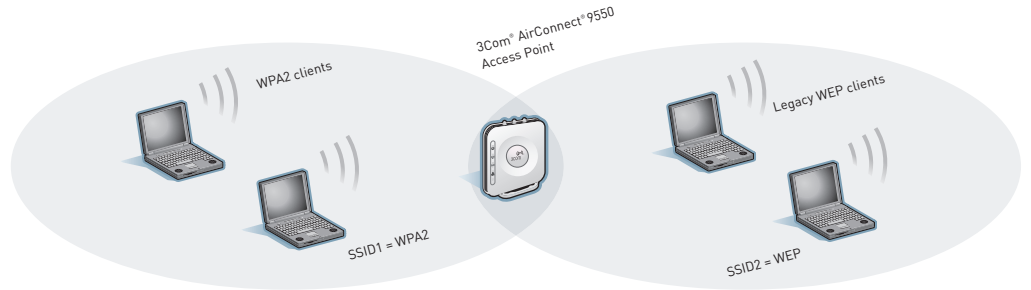


The Midspan solution distributes power to the PoE access point over existing switch connections, seamlessly extending network connectivity into hard-to-wire locations.



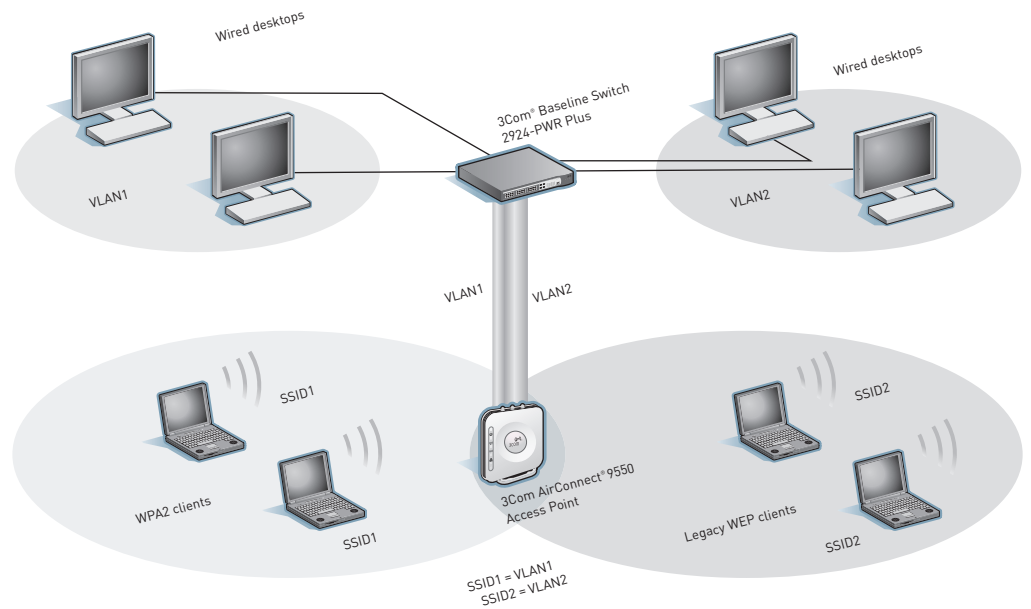
### Multiple SSID Support

Multiple SSID support enables many flexible configurations, including supporting multi-generation clients simultaneously—without losing the performance available for 11n clients or those with lower levels of security such as legacy WEP devices.



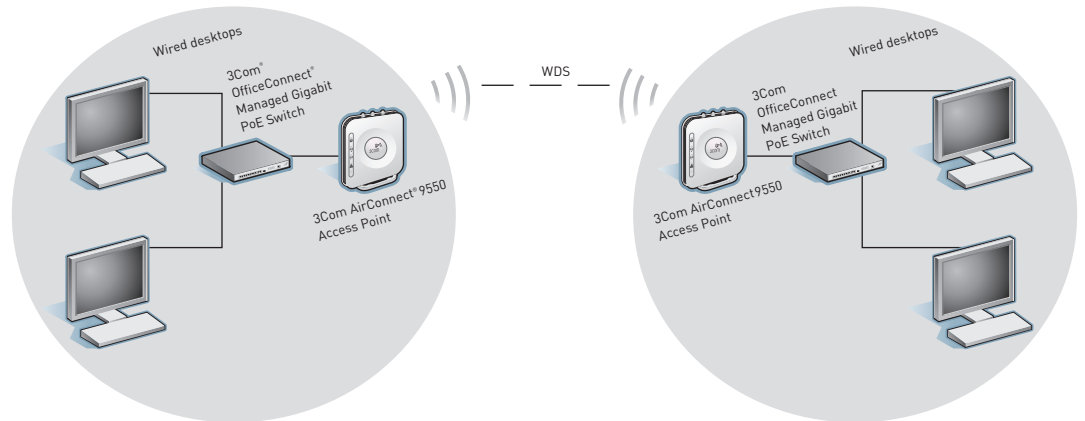
### Multiple SSID and VLAN Support

With a 3Com AirConnect Access Point, a single Ethernet link supports multiple VLAN traffic tunnels. Easily segment users that need priority access or different levels of security.



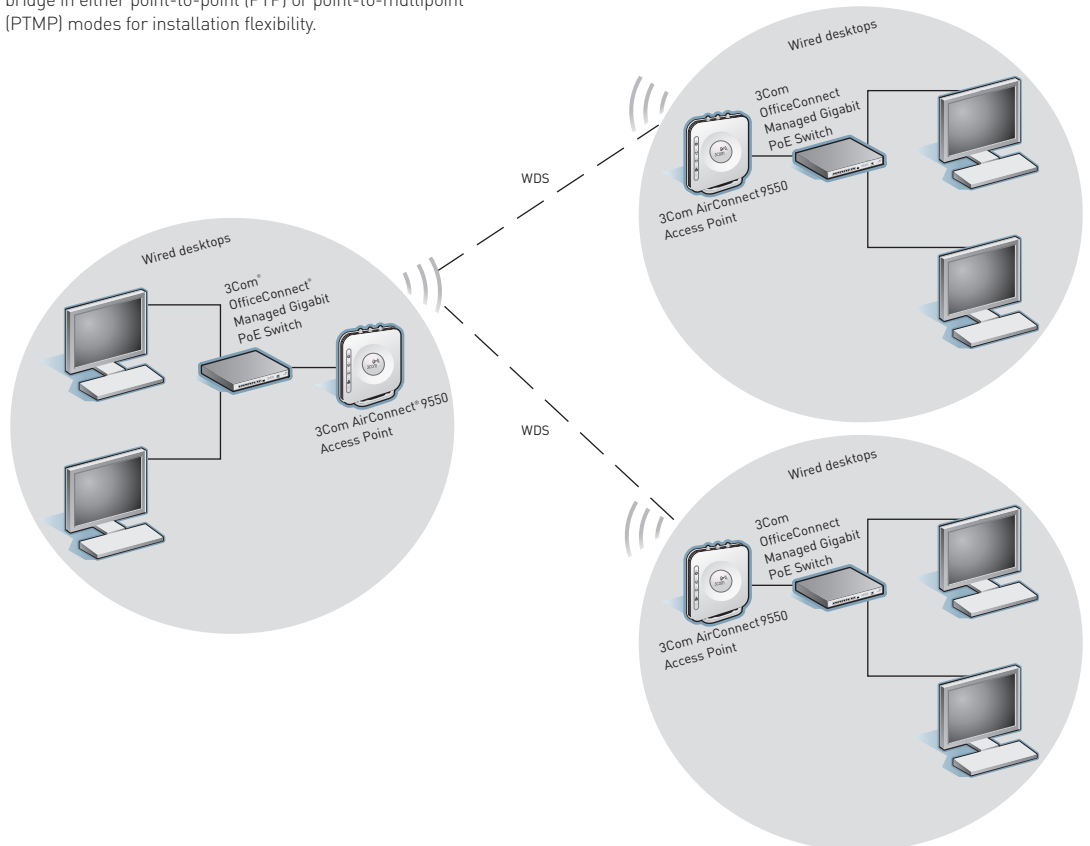
### Point-to-Point WDS Link

The 3Com AirConnect Access Point connects wired LANs with a Wireless Distribution System (WDS) link. The APs act as wireless bridges, forwarding traffic between LANs.



### Point-to-Multipoint WDS Link

A 3Com AirConnect Access Point can function as a wireless bridge in either point-to-point (PTP) or point-to-multipoint (PTMP) modes for installation flexibility.



## SPECIFICATIONS

Information in this section is applicable to both the 3Com AirConnect 9550 and the AirConnect 9150, unless stated otherwise.

### MEDIA INTERFACES

IEEE 802.11a, 802.11b, 802.11g, 802.11n draft 2.0  
(802.11a: AirConnect 9550 only)  
1 RJ-45 10BASE-T/100BASE-TX/1000BASE-T port with IEEE 802.3af PoE, auto-negotiating  
RJ-45 console port

### DATA RATES

**802.11a**  
54, 48, 36, 24, 18, 12, 9 and 6 Mbps  
(AirConnect 9550 only)

**802.11g**  
54, 48, 36, 24, 18, 12, 9 and 6 Mbps

**802.11b**  
11, 5.5, 2 and 1 Mbps

**802.11n**  
MCS 0 to 15 for HT20MHz,  
6.5-130 Mbps  
MCS 0 to 15 for HT40MHz,  
13.5-270 Mbps

### FREQUENCY BAND

802.11a: 5.15-5.85 GHz  
(AirConnect 9550 only)  
802.11b/g: 2.4-2.484 GHz  
802.11n: 2.4-2.484 GHz,  
and 5.15-5.85 GHz  
(AirConnect 9550 only)

### OPERATING CHANNELS:

Channel availability depends on local country regulations. Wireless LAN system administrator must choose correct country of operation. Channels are then automatically configured to comply with specified country regulations.

### MODULATION TECHNIQUE

802.11b: DSSS (Direct Sequence Spread Spectrum)  
802.11a/g/n: OFDM (Orthogonal Frequency Division Multiplexing) and DSSS

### MEDIA ACCESS PROTOCOL

CSMA/CA with ACK

### OPERATING VOLTAGE

PoE: 48V DC

### POWER CONSUMPTION

10.0 watts of PoE power with both radios active

### STANDARDS CONFORMANCE

IEEE 802.1X, 802.3ab, 802.3af, 802.3i, 802.3u, 802.11a (AirConnect 9550 only), 802.11b, 802.11d, 802.11g, 802.11n Draft 2.0  
WMM, WPA2/WPA, Wi-Fi CERTIFIED

### ANTENNA

3 internal per radio; 2T x 3R  
Optional external antennas also available

### SECURITY

WPA2- Enterprise  
WPA2- Personal  
WPA- Personal  
WPA- Enterprise  
AES/TKIP  
WEP 64-/128-bit encryption  
IEEE 802.1X EAP types:  
EAP-TLS, EAP-TTLS, PEAP

### MANAGEMENT

SNMP v1 and v2c  
Remote management with Web browser over HTTP  
Command line interface over Telnet  
Access point discovery utility

### LEDS

Power, LAN, 2.4 GHz radio, 5 GHz radio (AirConnect 9550 only)

### DIMENSIONS AND WEIGHT

Length: 19.7cm (7.8 in)  
Width: 19.7cm (7.8 in)  
Height: 4.5 cm (1.8 in)  
Weight: 1 kg (2.2 lb)

### REGULATORY/AGENCY APPROVALS

#### Safety

UL/CSA 60950-1  
EN/IEC 60950-1

#### Radio

FCC Part 15.247  
RSS-210  
EN 300 328 v1.7.1

#### EMC

FCC Part 15 Subpart B  
EN 301 489-17

#### SAR

FCC Guideline for Human  
Exposure IEEE C95.1  
EN 50392

### ENVIRONMENTAL RANGES

Operating temperature: -10 to 40°C  
(14 to 122°F)  
Storage temperature: -40 to 70°C  
(-40 to 158°F)  
Humidity: 10 to 95% non-condensing

### SYSTEM REQUIREMENTS

Computer with an Ethernet interface configured for Internet communication  
Operating system that supports an Ethernet connection with an IP stack  
Installation CD Discovery Application requires Windows XP, 2000 or Vista

### PACKAGE CONTENTS

3Com AirConnect 11n PoE Access Point  
Wall/desktop mounting stand  
Screw kit  
Quick Install Guide  
CD-ROM with discovery utility

### WARRANTY AND OTHER SERVICES

Three Year Limited Hardware Warranty  
Limited Software Warranty for 90 days  
90 days of telephone technical support  
Refer to [www.3com.com/warranty](http://www.3com.com/warranty) for details.

## ORDERING INFORMATION

PRODUCT DESCRIPTION	MODEL	3COM SKU
3Com AirConnect 9550 11n 2.4+5GHz PoE Access Point	WL-605	3CRWE955075
3Com AirConnect 9150 11n 2.4GHz PoE Access Point	WL-604	3CRWE915075
<b>Optional Accessories</b>		
3Com 802.3af Gigabit PoE Injector		3CNJPSE-GIG
3Com Ceiling Mount for AirConnect 11n Access Points		3CAPMOUNT
<b>Optional Antennas</b>		
3Com 2dBi Dual-Band Omni Antenna Kit		3CWE590
3Com 6/8dBi Dual-Band Omni Antenna		3CWE591
3Com 18/20dBi Dual-Band Panel Antenna		3CWE596
3Com 8/10dBi Dual-Band Panel Antenna		3CWE598
<b>Optional Antenna Cables</b>		
3Com Ultra Low Loss 6 Foot Antenna Cable		3CWE580
3Com Ultra Low Loss 20-Foot Antenna Cable		3CWE581
3Com Ultra Low Loss 50-Foot Antenna Cable		3CWE582
3Com R-SMA to SMA 6" Antenna Cable		3CWE586
<b>3Com Global Services</b>		
3Com Wireless LAN Site Survey, Network Health Check, Installation Services and Express <sup>SM</sup> Maintenance <a href="http://www.3com.com/services_quote">www.3com.com/services_quote</a>		
3Com University Courses		<a href="http://www.3com.com/3comu">www.3com.com/3comu</a>

For additional information, please visit [www.3com.com](http://www.3com.com)

Visit [www.3com.com](http://www.3com.com) for more information about 3Com secure converged network solutions.

3Com Corporation, Corporate Headquarters, 350 Campus Drive, Marlborough, MA 01752-3064  
3Com is publicly traded on NASDAQ under the symbol COMS.

Copyright © 2008 3Com Corporation. All rights reserved. 3Com, the 3Com logo, AirConnect, and OfficeConnect are registered trademarks, and Express is a service mark, of 3Com Corporation. Wi-Fi, Wi-Fi Alliance, the Wi-Fi CERTIFIED logo, and WMM are registered trademarks, and Wi-Fi CERTIFIED, WPA, and WPA2, are trademarks, of the Wi-Fi Alliance. All other company and product names may be trademarks of their respective companies. Wireless speed and performance depend on number of users, physical conditions, and other electronic devices in the area. While every effort is made to ensure the information given is accurate, 3Com does not accept liability for any errors or mistakes which may arise. All specifications are subject to change without notice.

401093-001 06/08

